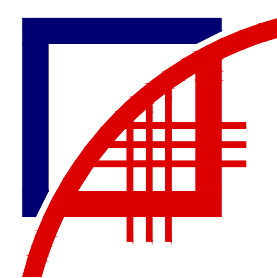
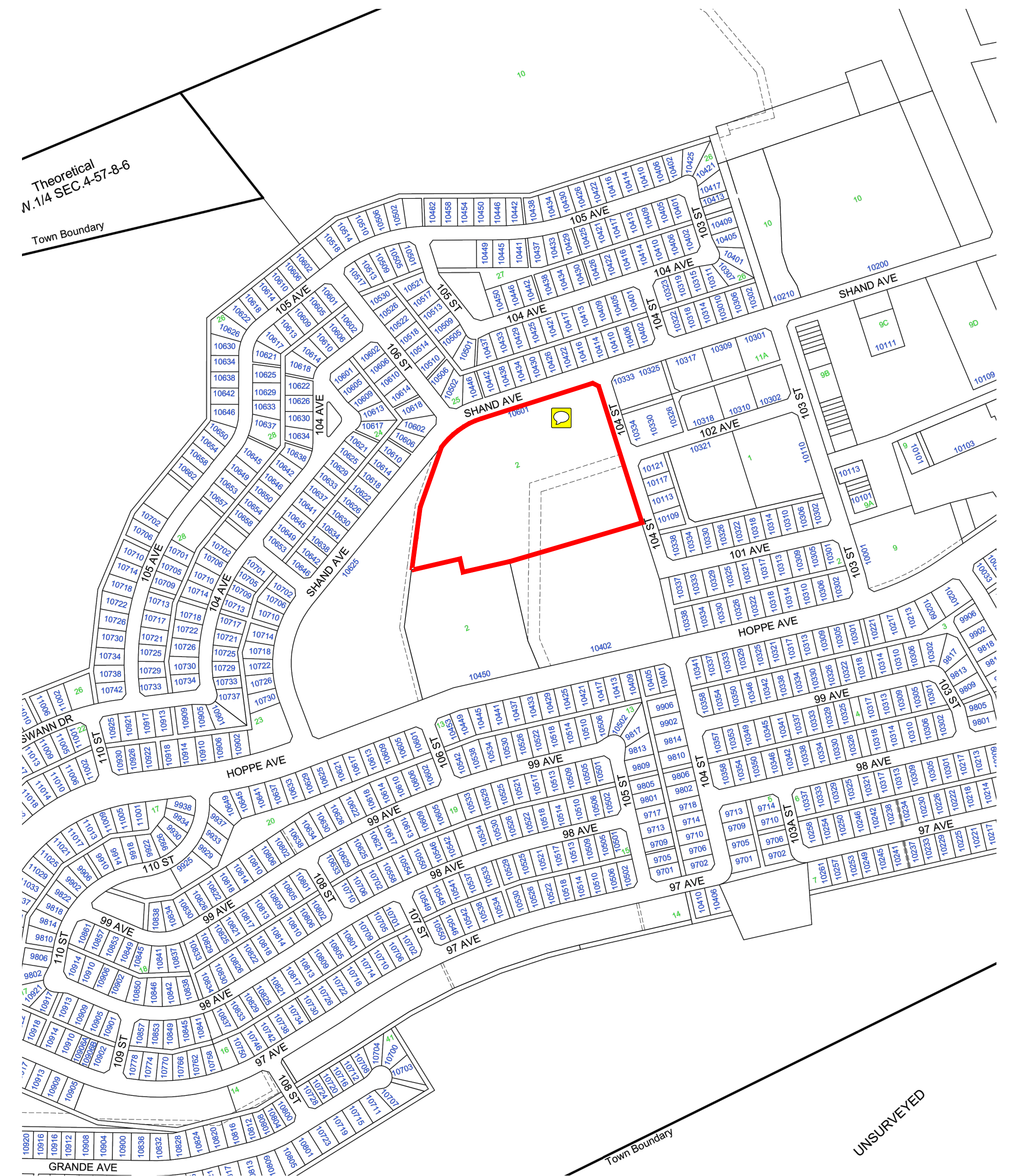


SITE PLAN
SCALE 1:500



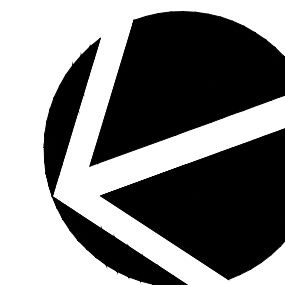
THE WORKUN GARRICK PARTNERSHIP
Architecture and Interior Design Inc.
Suite 1200, 10117 Jasper Avenue, Edmonton, Alberta T5J 1W8



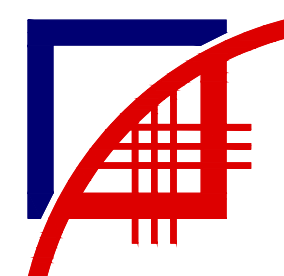
LOCATION PLAN
N.T.S.

GRANDE CACHE HIGH SCHOOL MODERNIZATION

GRANDE YELLOWHEAD PUBLIC SCHOOL DIVISION NO.77



FLOOR PLAN
SCALE 1:200



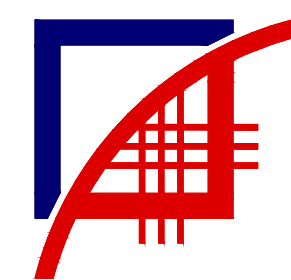
THE WORKUN GARRICK PARTNERSHIP
Architecture and Interior Design Inc.
Suite 1200, 10117 Jasper Avenue, Edmonton, Alberta T5J 1W8

GRANDE CACHE HIGH SCHOOL MODERNIZATION

GRANDE YELLOWHEAD PUBLIC SCHOOL DIVISION NO.77



OVERALL VIEW TOWARDS SOUTH



THE WORKUN GARRICK PARTNERSHIP
Architecture and Interior Design Inc.
Suite 1200, 10117 Jasper Avenue, Edmonton, Alberta T5J 1W8

GRANDE CACHE HIGH SCHOOL MODERNIZATION

GRANDE YELLOWHEAD PUBLIC SCHOOL DIVISION NO.77



NEW MAIN ENTRANCE & GYMNASIUM

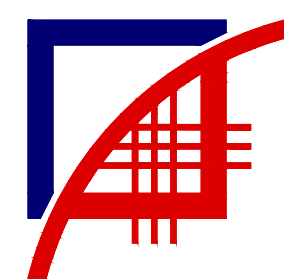


NEW LIBRARY



GRANDE CACHE HIGH SCHOOL MODERNIZATION

GRANDE YELLOWHEAD PUBLIC SCHOOL DIVISION NO.77



THE WORKUN GARRICK PARTNERSHIP
Architecture and Interior Design Inc.
Suite 1200, 10117 Jasper Avenue, Edmonton, Alberta T5J 1W8