



RECOGNITION PROGRAM

ONE

VISION

TEAM

GOAL

Kick-Off
2021

EDSON & AREA | GRANDE CACHE | HINTON | JASPER | LOBSTICK | TRANSPORTATION

Celebrating

5 years

VITAL PROPERTY SERVICES | Custodial
YVONNE FUREGATI | ESC Facilities/Finance
KRISTY CATER | ESC Finance
WADE OLSON | ESC Facilities
MIRANDA KEYES | FSLC
RYAN MAGUHN | Harry Collinge High
TRICIA PEARSON | École Jasper Elementary
TERESA SILLENCÉ | École Jasper Elementary
MARIE-EVE BISSONNETTE | Jasper Jr./Sr. High
KRISSTEN STOCKFISH | Jasper Jr./Sr. High
HOLLY PRINCE | Mary Bergeron Elementary
TRINA AMUNDRUD | École Mountain View
THOMAS MEIER | Niton Central
ANDREW VISSER | Parkland Composite High
ROBIN KILAND | École Pine Grove Middle
MAUDE CORRIVEAU | École Westhaven

10 years

MEGHAN CALLIHOO | Crescent Valley
DIANA WALL | Grande Cache Community High
JAYDEN MADSEN | Harry Collinge High
MATHIEU BROUSSEAU-TREMBLAY | Harry Collinge High
MELODY MACLEOD | École Mountain View
SHELLEY RECHNER | Parkland Composite High
AMANDA CLARKE | École Pine Grove Middle
JENNIFER YEE | Sheldon Coates
JIM AKERS | Transportation
SHERELYN TOCHER | Transportation
JANET MURRY | École Westhaven

15 years

DENNIS DAHL | ESC Facilities
LINDSAY OSLIE-JONES | Evansview
CLAY BECK | Fulham
TERRI BULL | Grand Trunk High
AMANDA HACK | Harry Collinge High
ANNEMARIE MACDONALD | École Jasper Elementary
JANET SLEMKO | Mary Bergeron Elementary
DANETTE DICKSON | Parkland Composite High
JACALYN MARCICHIW | Transportation
JONIE GERSPACHER | Wildwood



Celebrating

20 years

LINDA KARDASH | Custodial
ELAINE BRADFORD | Crescent Valley
LORI-ANNE FRATTINGER | Crescent Valley
BRIAN ORGE | ESC Facilities
JANICE DRIEDGER | Harry Collinge High
BARB SCHMIDT | Jasper Jr./Sr. High
MARIEA DENNISON | Mary Bergeron Elementary
REBEKAH GULLASON | Parkland Composite High
KATHY PEARCE | École Pine Grove Middle
KATHY ALWOOD | Summitview
ALMA IWANCIWSKI | Transportation

25 years

HEATHER WELLS* | Grande Cache Community High
JODI CAMPBELL | École Jasper Elementary
JAMES RANDALL | Evansview

30 years

LOUIS CORBEIL | École Mountain View
JODY DANCHUK | École Mountain View
JAN WIENS | Niton Central
KEVIN ANDERSEN | Parkland Composite High
KEVIN DYE | Parkland Composite High
NOLA PREVILLE | Parkland Composite High

35 years

MANON LUCAS | Mary Bergeron Elementary
LAURA ROOME | Parkland Composite High
TRACIE CAMERON | École Westhaven
JACHELLE HOLDINGS | Transportation

40 years

BEAUPRE BUSSING | Transportation

45 years

PENNY DUNN | Harry Collinge High

NOTE: Contents may be subject to change.

* retired as of the 2020/2021 school year

20 Years Long Service Recipients



LINDA KARDASH

Linda has never stopped amazing with her high level of perfectionism that she puts into her work. Everyone notices that when Linda does something, she always goes above and beyond. It's hard to believe that it is already 20 years since Linda started working at Crescent Valley and they are grateful to her for all of her amazing years of work. Linda's fine attention to details at work has made her an invaluable employee. It's her day of celebration for showing her loyalty and perseverance to her school.



ELAINE BRADFORD

Elaine started at Crescent Valley in 1992. Hard work, loyalty and diligence are some of the key descriptors used to describe Elaine by her peers. For more than twenty years, her students have been inspired by her dedication and passion to education and wanting the best for them.



LORI-ANNE FRATTINGER

Lori began at GYPSD in 2000 and has been at Crescent Valley since 2005. Her loyalty and hard work set an example for everyone on their team. It takes only one to make a difference in the lives of many, and Linda continually is that one since she has been at Crescent Valley!

20 Years Long Service Recipients



BRIAN ORGE

Brian started in the Facilities department as a carpenter in 2001 and in 2013, he accepted the position of Assistant Director of Facilities as well as the Division's Health and Safety Coordinator and Crisis Incident Commander. He became the Acting Director of Facilities in April of this year. Receiving his journeyman carpentry ticket from Fairview College in 1995, Brian has also received various Occupational Health and Safety accreditations during his time with the Division including his Principles of Health and Safety Management in 2013, followed by a National Construction Safety Officer designation in 2015 from the Alberta Construction Safety Association.



JANICE DRIEDGER

For the past 20 years, Janice has served the students of Hinton in a variety of roles first as a teacher aide and most recently, as secretary at The Learning Connection - Hinton. As she has done in all those roles, she brings a calm and reassuring presence to those around her at TLC. Her work managing the front desk is critical in ensuring that our students and their teachers have the necessary support to be successful in their work. More than ever this past year with the transition to a new leadership model for TLC, the staff and students have been grateful for Janice's steady hand at the wheel.



BARB SCHMIDT

Barb has been a teacher at JSHS for twenty years. Over this time, she has been an AISI lead teacher, an LST, an Assistant Principal, and has taught most subjects. In the past, Barb has also served as a local ATA school rep and PD zone representative. She has led student council, grad and other student service groups, clubs and activities with great success. Her passion for the outdoors is reflected in her teaching and this also led Barb to take on the lead GYPSD education teacher position at the Palisades Center for several years.

20 Years Long Service Recipients



MARIEA DENNISON

Mariea has spent her entire teaching career in Grande Yellowhead - as well as her student career - as she graduated high school from Niton Central school prior to heading off to the University of Alberta where she earned her Education degree. She began her teaching career at Niton in 1987 where she taught Grades 5 and 6 before deciding to take some time off from teaching to raise her family in 1996. Mariea returned to Niton in 2001, where she taught part time in junior high. In 2004, she transferred to Fulham Elementary, and over the next 13 years, she taught Grades 3 through 6 and took on the Assistant Principal duties in 2008. In 2014, she accepted a transfer to Edson where she taught Grade 5 at Evergreen School until it closed in 2017. She then moved over to MBE where she has continued to teach Grade 5 ever since.



REBEKAH GULLASON

Rebekah started with Grande Yellowhead in November of 2000 at A.H. Dakin as a teacher aide in kindergarten. She quickly transitioned into a secretary position, and in 2001, moved to Parkland Composite High. Her roots in PCHS run deep, having graduated there in 1984. Both of her sons also attended Parkland, graduating in 2007, and 2010, and she is excited to have welcomed her son Dylan as a colleague in the school for the 2020/2021 school year. Over the years, Rebekah has most valued her relationships with staff and students. She takes pride in the accomplishments of Parkland students, and particularly enjoys celebrating graduation each year.



KATHY PEARCE

Kathy started her career as an Educational Assistant in Jubilee Junior High. From Jubilee she moved to École Pine Grove Middle School. She spent the majority of her career in Pine Grove with a couple of years in Westhaven Elementary. Kathy is known for her quick wit and a gregarious personality that fills the room. She has spent many years focusing her efforts on working with and connecting to students. She builds long lasting relationships with both staff and students. Kathy has been an active, involved member of the school community in Pine Grove Middle School. She has volunteered her time to coach volleyball and golf. Kathy was able to bring her love of travel to Pine Grove with her involvement in the Canada Cuba trips that Pine Grove held for many years.

20 Years Long Service Recipients



KATHY ALWOOD

Kathy started her career working at Sheldon Coates School working as an educational assistant. She moved to Summitview School and continued to work as an outstanding educational assistant until she was given the opportunity to become the Summitview Librarian, at which she also excelled. She became the school's secretary in 2013. Kathy is respected by everyone as an absolute professional who always puts the best interest of the school and it's students at the forefront. She sits at the heart of the school and holds us all accountable to the children that we serve.



ALMA IWANCIWSKI

Glenda Alma began her career with Grande Yellowhead as a spare school bus driver in approximately 1999 in Edson until she was awarded a regular school bus route in September of 2001. Alma was born and raised in and around the Edson area and has raised three children in the community. Alma worked for a private contractor cleaning coaches, where her husband worked as a mechanic. It was her husband that convinced and taught her to drive school bus - thank goodness! Alma enjoys volunteering and became a volunteer firefighter for Edson in 2003.



25 Years Long Service Recipients



HEATHER WELLS - RETIRED JUNE 2021

Heather started her teaching career in a rural K-3 classroom in her home province of Newfoundland in 1987 which eventually led her to her current second home in Grande Cache in 1995. After two years teaching Grade 3 at Sheldon Coates, she moved over to the SonRise Christian Program at the High School for the next twenty-four years until her retirement. Heather trained as a reading intervention teacher through the Leveled Literacy Intervention and Reading Recovery Programs. She considered her time working with students in reading intervention to be the highlight of her career, and was very proud of all the wonderful students that she was able to help blossom into confident readers.



JODI CAMPBELL

For the past five years, Jodi has served as principal of Jasper Elementary School with heart and kindness. Her passion is children, and she has dedicated countless hours to making sure students felt welcome, cared for and successful at our school. Her patience and child-centred approach are a hallmark of her administration. She was initially hired at Jasper Elementary in 1996 to teach in the kindergarten program. Over the past twenty years, she has worked in various roles at the school, including Literacy Teacher Advisor, Leveled Literacy Intervention Teacher, Classroom Support Teacher, and Assistant Principal. Before this, she spent three years teaching Grade 1, Grade 3 and music in Fairview, Alberta. Her energy and passion for working with students to support their literacy achievement has enriched the learning of many students.



JAMES RANDALL

After graduating from Niton Central School and then earning his Education degree from the University of Alberta, James began his teaching career in Wildwood School where he was awarded the division's Outstanding First Year Teacher Award and a Wildwood School Gold Pin. James and his wife moved to southern Alberta for a year where he taught in a small rural school for a year before returning to teach at Niton Central where he was a teacher, coach and an Assistant Principal. After working in Niton for eight years, James moved to École Pine Grove Middle School in Edson and taught Grade 6 for eight years. In 2010 James moved from the classroom into the office and began working on his Graduate Degree from the University of Calgary. He worked at PGMS for seven years as Principal before returning to where it all began, Wildwood School. After one year as Principal at Wildwood, James accepted a second campus as the Principal at Evansview School. As of this year, he is back to one school as Evansview's Principal.

30 Years Long Service Recipients



LOUIS CORBEIL

Louis continues to flourish in his position as Assistant Principal and Physical Education (P.E.) Teacher. His passion for outdoor pursuits is shared with the entire school through the P.E. program as well as in the community with his involvement with the Hinton Nordic Skiers and the emerging Disc Golf Association. Louis' leadership skills have been highlighted as he has taken on the DELF testing and training role along with coordinating the French Immersion Expansion Grant for Grande Yellowhead schools. Within the École Mountain View School, Louis' Instructional Leadership has been prominent in the school wide implementation of The Daily 5.



JODY DANCHUK

Jody began her teaching career in Grande Cache. She taught Grade 3 for three years and a 2/3 split for one year. Jody was at both Sheldon Coates and Summitview. Next, Jody taught Grade 5/6 for three years and 3/4 for one year at Roche Miette in Hinton. Jody was also on the admin. team and was an Early Reading Intervention Teacher. For the past twenty two years, Jody has been a Kindergarten Teacher at École Mountain View School. Jody works collaboratively with her kindergarten teaching partners, and makes sure that her students mix with the other classes so that friendships are started at an early age. Jody fosters an enthusiasm for learning that stays with each of the students.



JAN WIENS

Jan started with Grande Yellowhead in 1991 at Grande Cache Community High School where she taught a variety of Math and Social Studies courses. She was the AISI Lead Teacher and served on the admin. team. Jan started her Master of Arts in Leadership and Training with Royal Roads University in 2004. She became the Assistant Principal of Summitview Middle School in 2007. After 19 years in Grande Cache, Jan transferred in 2010 to Parkland Composite High School to teach Grade 9 Math and Social Studies 9-12. She completed a certificate in Career Development and Academic Advising from the University of Calgary in 2021. Jan looks forward to her new role for the 2021/2022 School Year as Principal at Niton Central School.

30 Years Long Service Recipients



KEVIN ANDERSEN

Kevin started his teaching career at Parkland Composite High School in 1991 where he and his wife, Michelle, intended to stay in Edson for two or three years. With the exception of a teacher exchange to Australia in 1997, Kevin has taught, coached and spent an inordinate amount of time at PCHS. Kevin loves his family, teaching science, traveling and coaching. He is pleased to have spent his entire career at one school.



KEVIN DYE

Kevin began his career in Grande Yellowhead at Wildwood School, teaching Grades 3, 7, 8, and 9 Health and Grades 7-9 Language Arts. From there, he transferred in 1992 to Jubilee Junior High School in Edson where he taught Art, Language Arts, Social Studies, and the RIGHT Group, which was an outcomes based large group instruction program. He also served for two years on the school's admin. team, and coached the Jets Basketball Team. In 2000, Kevin joined the team at Parkland Composite High School where he has primarily taught Art and Social Studies, but also a host of other courses including Psychology, Photography, Forestry, Outdoor Education, and Audio Tech, in addition to coaching the Pacers Badminton team from 2010 - 2018. Kevin has particularly enjoyed designing and building the award winning PCHS Christmas Parade Float entry with his colleagues for the last few years.



NOLA PREVILLE

Beginning her career with Grande Yellowhead in 1991, Nola taught junior and senior foods at Parkland Composite High School. Since then, she has taught a variety of courses including Social Studies, Career and Life Management, Fashion Studies, Community Health and Science 24. Over her time at Parkland, she has particularly enjoyed having the opportunity to see her own children go through the school and graduate. She loves the variety of people and activities that make Parkland such a diverse and welcoming place to work and learn.

35 Years Long Service Recipients



MANON LUCAS

Manon started her career in 1986 as a teacher assistant in the French Immersion program at Evergreen School until 1996 when she took over as the school secretary. She sat in the school secretary chair for the next 20 years until Evergreen was closed in 2016. She thought about the possibility of retirement when Evergreen closed, but couldn't resist the opportunity to help open up a new school and to train yet another unsuspecting principal. She decided that she would do one more year and joined the staff at Mary Bergeron Elementary in 2017. At the end of that year Manon realized that the training program for this principal would take much longer than one year... and so, she has remained at Mary Bergeron for the past four years and still has much work to do!



LAURA ROOME

Laura started with Grande Yellowhead at Jubilee Junior High School in 1980 teaching French as a Second Language, Science 8, and Drama. She transferred to Parkland Composite High School in 1991, where she taught French as a Second Language, and eventually French Immersion Math. She fondly remembers teaching 3V into Wildwood, Evansburg, Grande Cache, and Jasper, which culminated in student trips to Europe. Another of her favorite memories has been doing "rapid expansion of gasses" experiments in the science department. She has greatly enjoyed and appreciated getting to collaborate with many colleagues, particularly in math and the sciences.



TRACIE CAMERON

Tracie started her career with GYPSD in 1986 working as an educational assistant at A.H. Dakin in a special education classroom. She moved to Jubilee Junior High School for a year and then on to Westhaven in a kindergarten classroom. She moved back to Jubilee the next year and stayed working there until the school was closed in 2004. She then moved over to work at Parkland Composite High for the next four years. Tracie took a year off of working with kids and worked with Lumber and Sundance Forest. She returned the next year to work at Pine Grove before moving over to work at the central office from 2012-2019. In 2019, she returned working as an educational assistant at École Westhaven School - back full circle into a kindergarten classroom.

35 Years Long Service Recipients



JACHELLE HOLDINGS - James and Audrey Birkenhagen

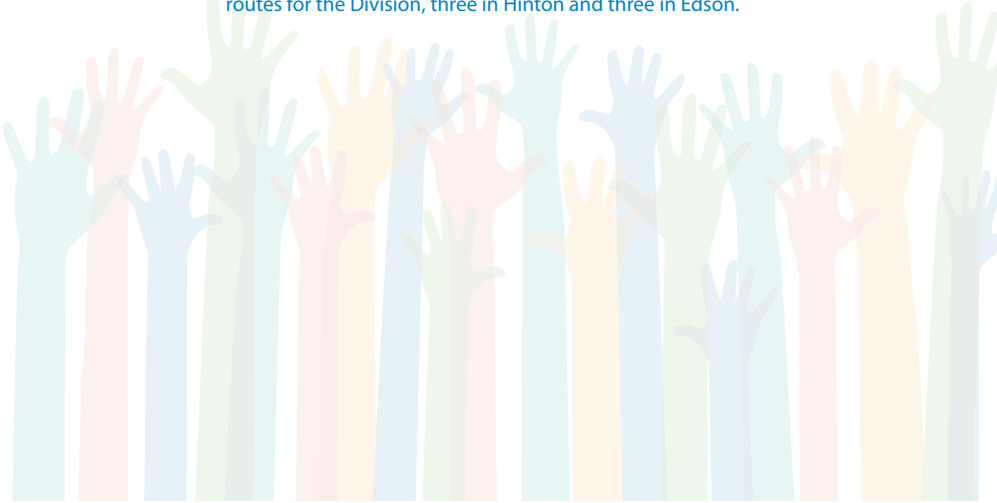
It was Ed Birkenhagen who started with a school bus contract, operating one bus route to Niton School in 1966. Almost as soon as James could drive, he was behind the wheel, driving students to and from school. In 1986, James started his own school bus contract service with GYPSD and in 2009, James and Audrey Birkenhagen formed a company known as Jachelle Holdings. Currently, they operate two school bus routes in the Niton area. The Birkenhagen family has provided GYPSD families and schools with excellent service for many years.

40 Years Long Service Recipient

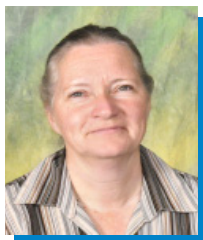


BEAUPRE BUSSING

Beaure Bus Service has provided school bus contract service to the Division for many years. It all started out with one little kindergarten run in Edson, Beaure's first contracted route with the Division and the inception of the company. Those kindergarten students must have really captured Thoreen's heart, because 40 years later, the family business is vibrant in both the Hinton and Edson communities. Beaure Bus Service currently operates six school bus routes for the Division, three in Hinton and three in Edson.



45 Years Long Service Recipient

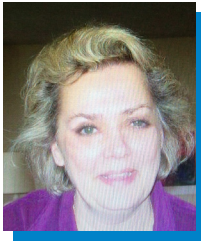


PENNY DUNN

Over a remarkable career serving the staff of students of Grande Yellowhead Public School Division, Penny has greeted everyone with a smile from a number of different desks behind which she worked her magic. Upon the closing of Roche Miette School, she found her way to Harry Collinge High School where she quickly established herself as an outstanding records secretary, ensuring that student records were accurately maintained and recorded. As times changed, so did Penny. Since her arrival at HCHS, she has learned several different student record programs and most recently ensured that the migration to PASI went as smoothly as it did for HCHS. There have been no shortage of reasons for Penny to get frazzled while those around her did so. She has always maintained an even keel and fantastic attitude to simply get the job done right - the first time.

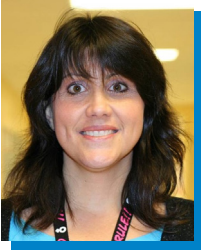


2020/2021 Retirees



INA ACHESON

Ina's career began in 2002 when she moved to Edson from Saudi Arabia. At that time she purchased a property beside A.H. Dakin School, and worked as an online medical transcriptionist. She often watched the students as they played at recess, but didn't give much thought to a career in schools until a friend who worked at Dakin suggested that she consider applying. Ina did apply, got the position, and stayed with GYPSD until her retirement. Although she started with A.H. Dakin, she rode the 'T.A. carousel' and worked at several schools over the next years including Evergreen, Westhaven, and Fulham. Eventually, she returned to A.H. Dakin and then to MBE until her retirement in December 2020. As Ina moves on to the next phase of her life journey, she plans on continuing with her online medical transcription work, working outside around her place when the weather permits, and tackling some of the renovations in her home that she has wanted to do for some time.



MAXIME ALDRED

Maxime started working at École Mountain View in October of 1998 in English Kindergarten, and then moved to French Kindergarten. She was such an asset for the school with her ability to work in both English and French. Over the years, Maxime worked with many teachers from Kindergarten to Grade 7. Maxime took great pride in her one-on-one and small group time with her students. Maxime worked closely with the teachers to deliver supportive programming for everyone that she worked with. Maxime could be counted on to do whatever it took to help her students improve, no matter what grade level or in what language. Maxime worked hard on a daily basis to improve students' literacy and numeracy skills. Beyond the curriculum, Maxime ensured that she was building student confidence and raising student self-esteem.



KEN BALUCH

Ken started with the Division in 1988 as a carpenter on the modernization project at Harry Collinge High school while he was living in Hinton. In 1990, Ken moved to Edson for seven years, then to the Evansburg area to look after general maintenance in the Lobstick zone. He moved back to Edson when he became the Assistant Director in 2001 and in 2003, Ken became the Director of Facility Services. In 2019, he became the Managing Director of both Transportation and Facilities until his retirement in June of 2021. Over the last few years, Ken successfully managed a number of capital projects for the Division including the full modernization of Grande Cache Community High School, and two new schools, Jasper Junior Senior High School, and Mary Bergeron Elementary School in Edson. The Alberta Educational Facilities Administrators Association recognized his knowledge and experience in 2012 when he earned his certification as a Certified Educational Facility Manager.

2020/2021 Retirees



HEATHER BRIËN-KING

Heather joined GYPSD in 2006 and has taught Kindergarten, Grade 1, and Grade 2 at Sheldon Coates Elementary School in Grande Cache. Heather established herself as a reading specialist and was a Levelled Literacy Intervention instructor for six years of her career. She was also instrumental in beginning the outdoor learning program at Sheldon Coates. Heather will be remembered for her artistic talent, her sense of humour, and her dedication to her young students. She plans to retire to Harry's Harbour, a coastal community in her home province of Newfoundland, with her husband Bruce and their dog Fergus.



JOHN CLOSE

During his tenure with GYPSD, John was a calm presence in schools as he would investigate and fix any technical issues that came his way. John relished a challenge; he would persevere regardless of the complexity of the issue. When deploying new software and hardware, he did a meticulous job and no detail was overlooked. John maintained excellent relationships with staff as he always prioritized students and staff. A passion of John's was sharing his knowledge of robotics and coding with students. When GYPSD was pioneering video conferencing throughout the province, John provided leadership and expertise to a number of other school divisions.



RHONDA DEGERSTEDT

Whether teaching music, drama, literacy, or social studies, working with children in kindergarten or instructing junior high students, Rhonda had a positive impact on her students. Her creativity shone; her lessons motivated. The learning in Rhonda's classes was always active and engaging. Students were required to immerse themselves in the activity, to get up, to move, to perform. She inspired them to step out of their comfort zones and to grow through challenge. She did the same for her colleagues. In addition to advocating for students, Rhonda was there for families and the community at large. Rhonda participated whole-heartedly in Indigenous activities outside the classroom and brought Indigenous leaders and their teachings back to the school.

2020/2021 Retirees



CINDY DESGROSEILLIERS

Cindy was an educational assistant with Grande Yellowhead since 2004. She always went out of her way to support students and made sure that they had what they needed to grow and be successful. Her genuine care for students in her school shone through everyday that she worked with kids. Cindy was talented in working with special needs students individually and in the classroom. She was able to channel her caring for the children she was supporting into a service that met that child's educational and social emotional needs. She was also an excellent classroom support, connecting to and supporting the needs of the teacher through supervising classes, working with small groups of students, taking detailed notes and providing them to students, as well as many other tasks that fell on a capable and talented educational assistant.



EDITH FAFARD

Edith was a cornerstone of the French Immersion program at École Mountain View, providing supports for students, colleagues and parents. Edith shared her passion for Daily 5 and Café, as well as Kagan Cooperative Learning structures with her school team. Her leadership in these areas helped develop consistency in learning structures throughout the school. Edith worked collaboratively with her grade level partners to enhance their teaching skills and provide excellent learning opportunities for their students. Over her career, Edith shared her knowledge beyond the walls of the school, presenting sessions for the North Central Teacher Convention along with other convention boards within Alberta. In addition to her classroom teaching, Edith also provided French language supports to students of all ages in small groups and one-on-one settings, and to parents to learn skills to help their child with reading and learning a second language.



COLLEEN MACZA

An already seasoned teacher, Colleen started subbing at Jasper Elementary ten years ago, and took over the reins of their music program seven years ago and wanted all children to experience the joy of music. She spent many hours researching new songs and material, staying connected with music professionals and teachers around the world to bring the best experiences to her students at JES. Besides planning the annual Christmas concerts, she also took pride in getting classes ready for the Yellowhead Arts Festival. A highlight of her career would be winning first class honours with distinction for her Grade 5 percussion ensemble, playing a toe-tapping version of "I Like to Move It." Colleen also devoted countless hours towards extracurricular programming. She has led a variety of music-based clubs including: ukulele club, carol club, percussion club, band, drumming club, and recorder club. Her clubs were always very popular amongst students. Her creativity, professionalism, and dedication to her students will not be forgotten.

2020/2021 Retirees



MARK MARIS

A born and bred Edsonite, Mark graduated from Parkland Composite High School in 1983 then returned as a teacher in 1988 in the Business Department after completing his Education degree at the University of Alberta. One of Mark's first classes was Typing 10, where he taught eager minds how to master the typewriter. He stayed teaching in the business department through the transition to computers. After six years of teaching, Mark moved into the role of Assistant Principal for four years before making the choice to put an administrative career on hold to spend time raising his three sons. At this time, he also transitioned into the physical education department where he passed on his passion for sports and an active lifestyle. In 2016, Mark refocused on leadership and became the proud Principal of Parkland Composite High School.



ESTELLITA MAURER

Estellita Schilperoot Maurer, better known as Es, came to The Learning Connection in 2006 and was an integral part of their small but mighty team for the next 14 years. As the valued administrative assistant at the busy outreach school, Es played an important role in ensuring that our day-to-day and year-to-year operations ran smoothly and efficiently. Callers and visitors were sure to be greeted with a warm welcome, while students, parents, and staff alike could often be found hanging over her desk looking for a sympathetic ear, a laugh or a joke, or an inspiring pep talk, depending on the circumstances. As TLC grew, so did Es' workload and responsibilities, all of which she handled with aplomb. Additionally, Es was always willing to attend to details outside the parameters of her job description to help us make TLC a safe and caring haven for our students, whether joining in on field trips, helping out with crafts and activities, keeping the fridge and cupboards stocked with healthy snacks as well as occasional treats, or bringing in clothes, school supplies, or other supports for students in need.



WANDA MILUCH

Wanda started teaching for GYPSD in 1990 with her first teaching assignment being at A.H. Dakin School. She taught Grades 3, 4 and 4/5 combined during her tenure at A.H. Dakin and also served on the school admin. team for one year. She moved to Evergreen School in 2006 where she taught Grade 4 and also served as the AISI lead teacher for two years and the Assistant Principal for four years. In 2017, Wanda joined the inaugural teaching staff at the newly opened Mary Bergeron Elementary and was an integral part of its success ever since. For the past four years she taught Grade 4 at MBE and took on many teacher leadership roles there as well.

2020/2021 Retirees



HELEN PAYETTE

Helen has been a valued staff member of Peers, Fulham, Jubilee, and The Learning Connection, and she continued to play a pivotal role within the team at École Pine Grove Middle School as an Assistant Principal. Helen has been nominated for Excellence in Teaching awards and she approached everyday with passion, dedication and creativity. She was a mentor, friend and leader to her staff. She commonly spent time with young teachers after school, sharing her knowledge and her passion for her craft. Helen's early professional Arts training was a benefit to students and many community groups over the years and resulted in an annual musical production at Pine Grove for over hundreds of students. Helen's commitment to student growth was evident in her willingness to take on new challenges and develop her skills in areas outside of her comfort zone.



KARYN PETTY

Having taught elementary classes for 30 years, Karyn became a master in the classroom. She was always positive and accepted any challenge with grace and growth. Karyn was the true definition of a lifelong learner as there was nothing that she was not willing to try. Karyn began her career with Grande Yellowhead by teaching seven years in Peers; covering all primary grades from kindergarten to Grade 3. She then moved on to Niton where she completed 23 years of teaching. She started out working with the AISI project which turned into the Reading Recovery program where she started her journey to becoming a "Reading Expert". She was instrumental in developing the Guided Reading program at Niton and became the 'Lead Teacher' in their reading program. Karyn instructed numerous parents, grandparents, and community members alongside all the EA's and elementary teachers in the methods of Guided Reading which they hold up as a shining success in their school.



SUSANNA PFISTERER - PHOTO UNAVAILABLE

Susi worked as a teaching assistant at Jasper Elementary School from January 2013 - September 2020. As a long-time Jasper resident, she shared her passion and knowledge of the park with staff and students. In May 2016, Susi released a novel 50 Percent of Mountaineering is Uphill and received the Alberta Readers' Choice Award. JES is incredibly fortunate that Ms. Pfisterer could share her love of writing with students and use her background in Occupation Therapy to help students to thrive. Her top-notch organizational skills and her ability to keep learning fun and engaging helped students achieve success in their learning.

2020/2021 Retirees



MARY ANN PODGORNIAK

Mary Ann started her career at Evansview school and worked there filling a educational assistant role from November to June before being hired full time at Niton Junction to work in the kindergarten class. After one year in Niton, Mary Ann moved to Wildwood and was a part of the team ever since. During her time at Wildwood School, Mary Ann has filled numerous roles working with children and staff. She worked in each of the three divisions of the school and her love for children has been evident at each level. Mary Ann loved to share her cooking talents with students and helped students bake apple pie, Easter bread, Easter eggs, and numerous cookies over her career. Mrs. P's years at Wildwood allowed her to impact the lives of many children and some of her fondest memories were working with children from the time they are very young until they were ready to move to Grand Trunk to finish their education. She developed positive, caring relationships with her students and as a result, she was called "Mom" or "Grandma" on more than one occasion.



ROGER REDMAN

Roger's career began as a substitute teacher, before he moved to job sharing so he could be a parttime stay at home father. He started working full time at Jubilee Junior High before moving to Pine Grove Middle School until his retirement. As the athletic director at PGMS, he was instrumental in developing the Greater Yellowhead Athletic Conference (GYAC) Handbook, ensuring PGMS was represented at the GYAC and Alberta Schools' Athletic Association's tables, and ensured that decisions made were in the best interests of students. Roger was a long-serving and well-respected volleyball and golf coach within the school, was heavily involved in the local community soccer organization, and was an active member of the Edson Golf Club. He was recognized by the Health and Physical Education Council for his continued support of school and community athletic programs. In his last couple of years at Pine Grove, he implemented The Green Team Recycle Program. This drastically reduced the waste in the school and was recognized with the Award of Excellence from the Recycling Council of Alberta in 2019.



HOLLY SMITH

Holly's quiet, calm demeanor shone in the classroom for her entire career. She always remained focused on her students' needs, regardless of the situation. This wonderful trait was also passed along to her students as they were also more able to remain focused and on task while others were excited and distracted. Holly could always be counted on to advocate for her students, allowing their voices and opinions to shine bright. Holly also shared her love of the outdoors with her students; class field study trips incorporated outdoor activities that enhanced students' learning and generated an appreciation for the great outdoors. Inside the classroom, her students had an abundance of hands-on and practical experiences in which they demonstrated their knowledge and learning.

2020/2021 Retirees



MARY STANLEY

Mary began her career in 2000 with Grande Yellowhead as a spare school bus driver in Edson. She was then awarded a full time bus route in September 2012. Mary has driven bus for GYPSD for approximately 20 years. Mary and her family have lived in this area since the 1980's. She used to be a 4H leader, as well as an educational assistant at Fulham School for three years. If you ask Mary, she will tell you she is a full time rancher, and loved to drive bus in her spare time.



CATHY THOMAS

Although Cathy had just started her teaching career before coming to teach at Harry Collinge High School, it was in Hinton that the young teacher truly established herself in the classroom as a compassionate teacher and in the staffroom as a valued colleague. Cathy was deeply involved in the Hinton Historical Society and played a key role in moving the old train station to its new location where it now serves as the centerpiece to the Northern Rockies Museum of Culture and Heritage. She has served in virtually all roles with the Hinton SPCA and, again, was a key driver in the establishment and construction of what is now their current, beautiful home. Cathy liked to present herself as a tough, no-nonsense taskmaster however, she always put students first, holding them accountable for their learning, but never left a struggling student behind when she could help the student get across the line.



KATHY VELICHKO

Kathy began her career with Grande Yellowhead Public Schools in 1997 at Parkland Composite High School where she started as a casual substitute in the office and then accepted a position as an educational assistant. Kathy moved back into the office as an administrative assistant in 2000. If you needed to know something, you could always ask Kathy. If you needed help with anything, she was there. She would be often be seen using handyperson tools to fix things like the Xerox machine and on ladders making adjustments around the school. Kathy was the one behind the scenes ensuring that events were organized and decorated with splendor. From designing exquisite hospitality suites for the Board of Trustees to hosting amazing retirement functions at the Galloway museum for fellow colleagues, Kathy always created a magnificent environment that showcased PCHS, the staff, and the students. She also had the greatest school spirit and participated in every theme day; Kathy the Good Witch, never ever forgot Halloween and she certainly could not be missed cheering on the students as they threw pies at their teachers for cancer fundraisers.

2020/2021 Retirees



CAROL WADEY

Carol began her career with Grande Yellowhead in 1985 as a spare bus driver. She stopped doing this in the year 1993 to raise her family. In 1997, Carol went to the office to talk to them about one of the buses her daughter rode on, and walked out with a position as a spare bus driver once again. The route that Carol really enjoyed driving was E8 and was awarded this route in September 2003. Carol was known for being a strict but fair bus driver, one who made sure the students were quiet and that her bus was well taken care of. Saying goodbye to the children was the hardest part of her job as a bus driver.



IRIS WEGNER

Iris worked as an educational assistant for 20 years at Grande Cache Community High and SonRise. Iris was very well liked by all of her students and the staff. She treated students as if they were her own grandchildren. Iris worked with a variety of students from K-12 and worked for many years with students with severe disabilities and excelled in that role. Iris is looking forward to travel in her retirement.



HEATHER WELLS

* Please view her write-up under the twenty years of service section of the program



LAURIE YOUNG

Laurie grew up in Peers and graduated from Parkland Composite High School. She received her EA Certificate at Red Deer College in 1988. Laurie first started as a volunteer for Grande Yellowhead in 2001, and was later hired in 2005 at Fulham School, where she has spent the whole of her career. Laurie excelled at supporting students who need speech and occupational therapy. Laurie was an excellent team mate to have on staff, always willing to pitch in and help when needed. Her sense of humor, friendly nature, and keen organization skills were greatly appreciated by all.

Board of Trustees



This event is proudly hosted by the Grande Yellowhead Board of Trustees (left to right)

Ken Fate, GRANDE CACHE | Ellen Aust, HINTON | Joan Zaporosky, Vice Chair, EDSON |
Brenda Rosadiuk, Board Chair, LOBSTICK | Fiona Fowler, EDSON | Shirley Caputo, HINTON
| Dale Karpluk, JASPER



Special Recognition

MARY ANDREASSON

Leadership Professional Certificate

KRISTIN BASARABA

Education Certificate in eLearning

BETH JOHNSON

Edwin Parr Finalist

BRENDA KELLY

Graduate Certificate in Educational Research,
Specialization in Interdisciplinary Studies and
School Leadership

CASSIE LENGYEL

Teacher Aide Certificate

BROOKE STERLING

Certificate in Early Childhood Education

MEGHAN AURIAT

Advanced Leadership Certificate

TEENA GIROUX

Advanced Leadership Certificate

Thank you
for your
dedication!



the 1990s, the number of people who are employed in the service sector has increased in all countries. The increase is most pronounced in the United States, where the service sector has become the dominant sector of the economy.

The increase in the service sector has led to a decline in the manufacturing sector. This is due to a number of factors, including the increasing cost of labor, the increasing cost of energy, and the increasing cost of raw materials. In addition, the manufacturing sector has become more competitive due to the increasing number of firms in the sector.

The decline in the manufacturing sector has led to a decline in the number of people who are employed in the manufacturing sector. This is due to a number of factors, including the increasing cost of labor, the increasing cost of energy, and the increasing cost of raw materials. In addition, the manufacturing sector has become more competitive due to the increasing number of firms in the sector.

The decline in the manufacturing sector has led to a decline in the number of people who are employed in the manufacturing sector. This is due to a number of factors, including the increasing cost of labor, the increasing cost of energy, and the increasing cost of raw materials. In addition, the manufacturing sector has become more competitive due to the increasing number of firms in the sector.

The decline in the manufacturing sector has led to a decline in the number of people who are employed in the manufacturing sector. This is due to a number of factors, including the increasing cost of labor, the increasing cost of energy, and the increasing cost of raw materials. In addition, the manufacturing sector has become more competitive due to the increasing number of firms in the sector.

The decline in the manufacturing sector has led to a decline in the number of people who are employed in the manufacturing sector. This is due to a number of factors, including the increasing cost of labor, the increasing cost of energy, and the increasing cost of raw materials. In addition, the manufacturing sector has become more competitive due to the increasing number of firms in the sector.

The decline in the manufacturing sector has led to a decline in the number of people who are employed in the manufacturing sector. This is due to a number of factors, including the increasing cost of labor, the increasing cost of energy, and the increasing cost of raw materials. In addition, the manufacturing sector has become more competitive due to the increasing number of firms in the sector.

The decline in the manufacturing sector has led to a decline in the number of people who are employed in the manufacturing sector. This is due to a number of factors, including the increasing cost of labor, the increasing cost of energy, and the increasing cost of raw materials. In addition, the manufacturing sector has become more competitive due to the increasing number of firms in the sector.