



COMMUNITY ENGAGEMENT

Three Year Education Plan

SURVEY RESULTS 2022

1. What classroom reading and writing activities and learning does your child, or you as a student, find enjoyable and useful?

Classroom Practices

- Literacy Circles
- Levelled Literacy programs
- Real-world writing
- Heggerty Method
- Collaborative Writing
- Journal Writing
- Word-walls
- Explicitly taught and embedded literacy strategies across the subject areas

Creative Writing

- Develop Imagination
- Explore voice and style
- Play with conventions
- Try different types of texts

Student Choice

- Types of text
- Range of topics
- Interest led
- New and diverse perspectives

Home Connections

- Books and magazines in the house
- Reading before bed
- Role-model reading
- Routine library visits

"The more that you read, the more things you will know. The more that you learn, the more places you'll go."
- Dr. Seuss

2. What classroom numeracy/math activities and learning does your child, or you as a student, find enjoyable and useful?

Classroom Practices

- Development of Number Sense
- Math Games
- Math Projects
- Coding Activities
- Multiplication memorization
- Mad Minutes
- Number Talks
- Mathletics and Prodigy
- Real-world applications
- Careers and Math
- Financial Literacy

Home Connections

- Budgeting and finance conversations
- Games
- Importance of math to careers
- Use of daily math
- Home projects

"What is mathematics? It is only a systematic effort of solving puzzles posed by nature."
- Shakuntala Devi.

3. What hopes and dreams do you have for the young people in your community?



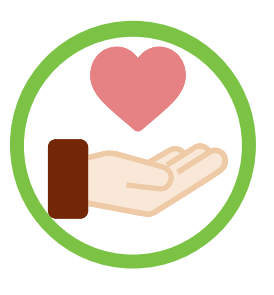
Career Pathway Options



Confidence as a Life-Long Learner



Community Oriented



Empathetic and Inclusive



Growth Mindset

"The greatest gifts you can give your children are the roots of responsibility and the wings of independence."
- Denis Waitley

4. What other educational programming options are you interested in or want expanded?

- Advanced Placement
- International Baccalaureate
- Second & Third Language Options

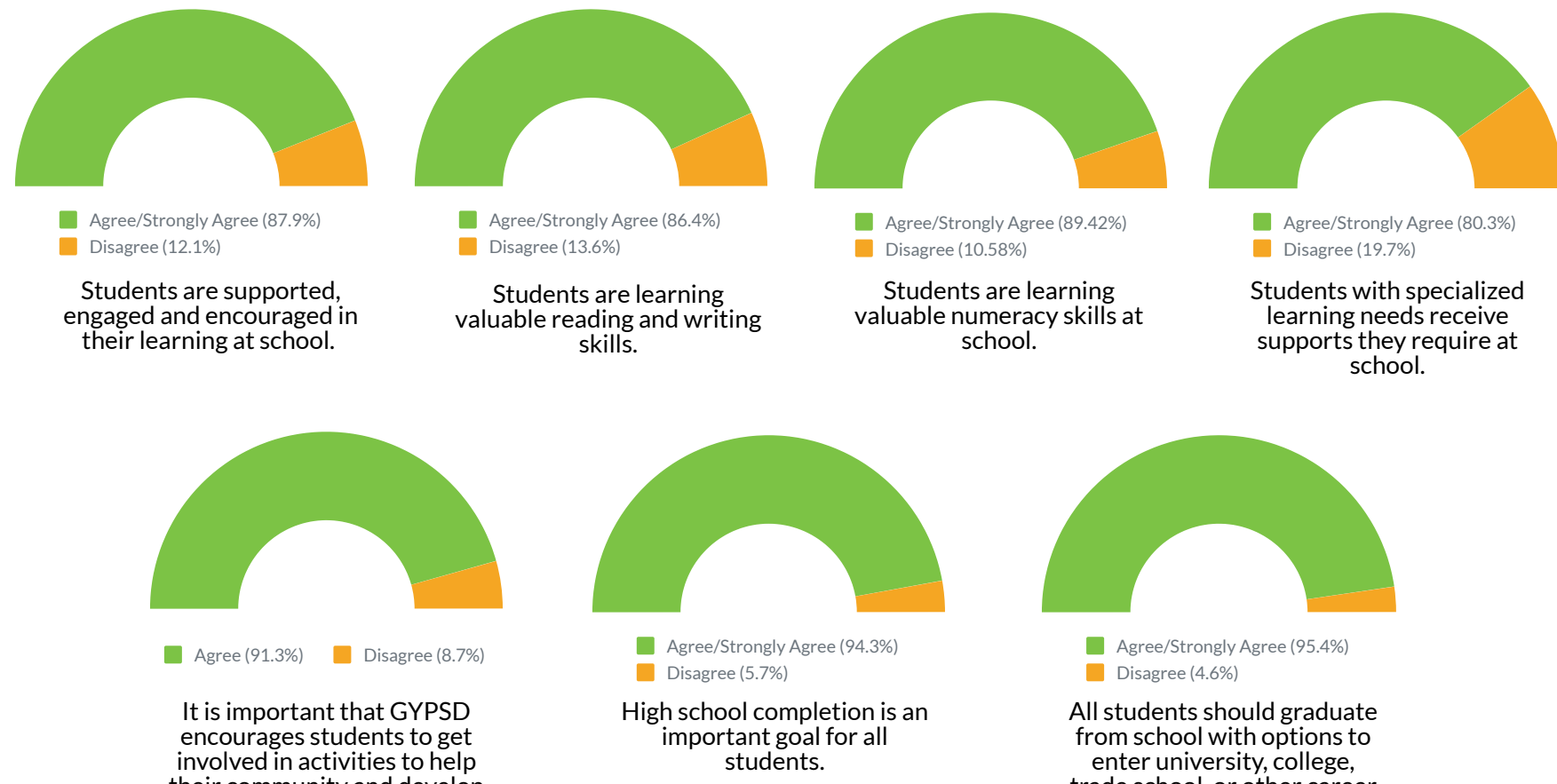
Academic Programs

- Leadership
- Lifeskills
- Online Safety
- Off-Campus & Out-of-school Learning Opportunities

Social and Character Programs

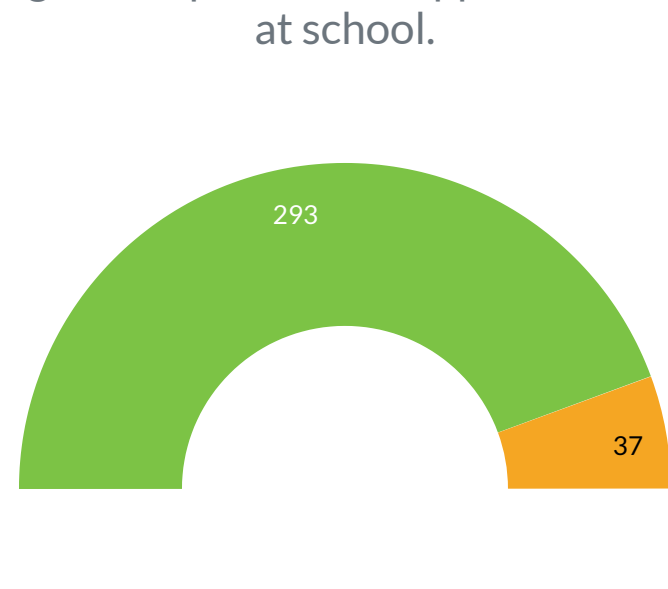
"Children learn from anything and everything they see. They learn wherever they are, not just in special learning places."
- John C. Holt

Education Plan Online Survey Feedback (n = 874)

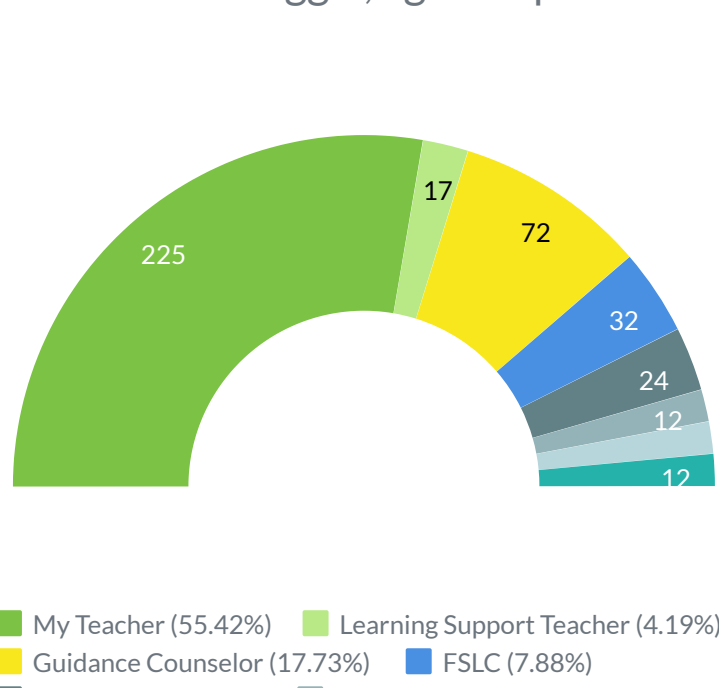


Students' Responses Online Survey Feedback

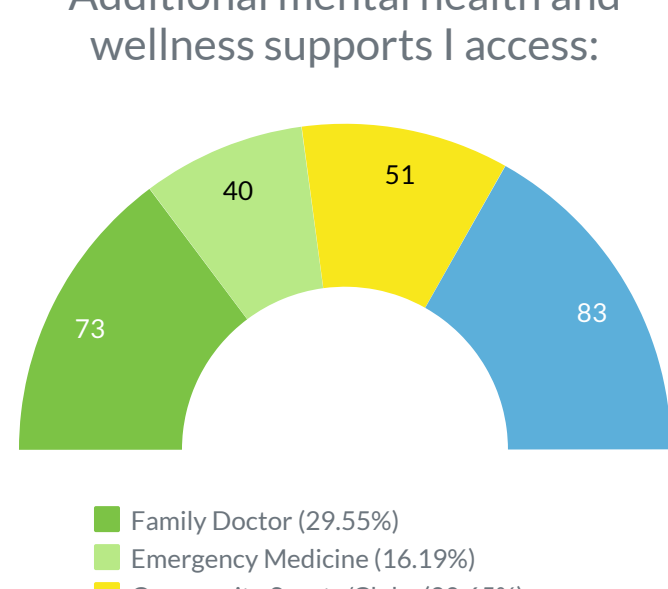
I get the specialized supports I need at school.



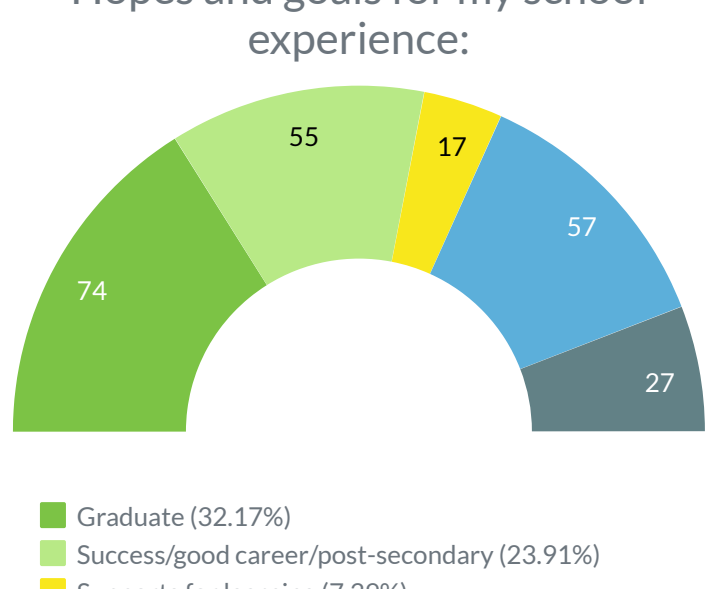
When I struggle, I get help from:



Additional mental health and wellness supports I access:



Hopes and goals for my school experience:



The Board of Trustees extends its appreciation to all those who contributed their input into the Three Year Education Plan

Grande Yellowhead Public School Division is committed to actions that support:

- 1) Student Learning
- 2) Teaching and Leadership Excellence
- 3) Community Engagement



Visit www.gypsd.ca to learn more.