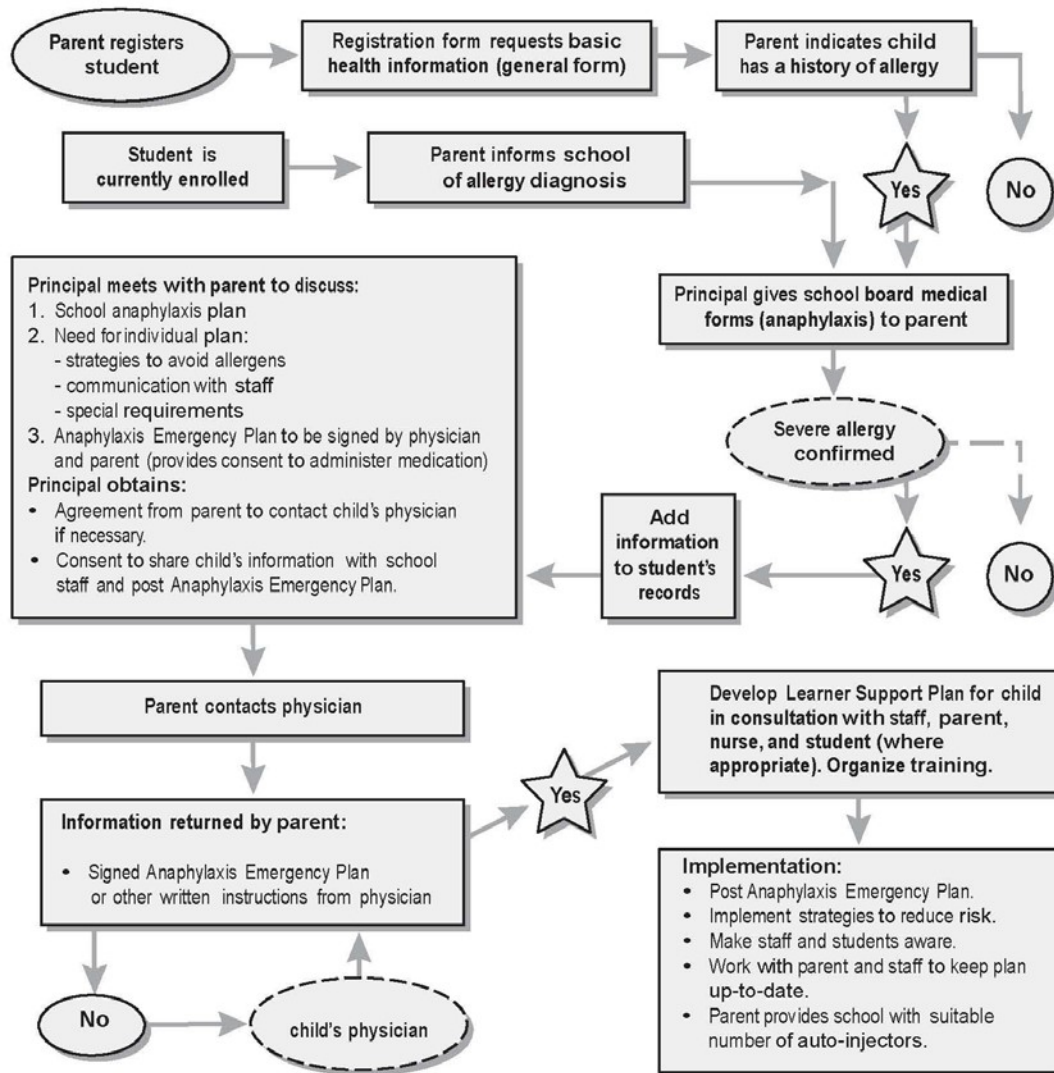


Action Steps for Anaphylaxis Management

JLCD-E (9)



Source: Managing anaphylactic reactions at school, *Anaphylaxis Guidelines for Schools: severe allergic reactions*, New South Wales Department of Health & Department of Education & Training, Australia. Adapted with permission from NSW Department of Health.

Anaphylaxis in Schools & Other Settings - Copyright © 2005 Canadian Society of Allergy and Clinical Immunology

Approved: March 21, 2018
 Amended: July 1, 2018, February 2020